

Why should I join MatCH 2?

We need your help to find out about teenagers' health and wellbeing, so we can help improve services, policies and programs that affect the lives of teenagers in Australia. As a bonus, all teens who complete the survey will receive a Prezzy Smart eGift Card for their time. As the questions are specific to your life such as your age and your sex, some teens will see more questions than others. That means the value of the gift card will vary depending on the number of questions you are asked. You will receive \$20-\$30 for your time.



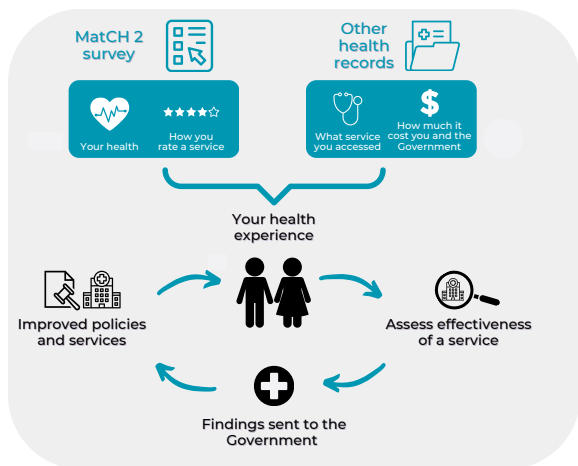
What's involved?

We will ask you to:

- Complete a 20–30-minute online survey about your health and experiences with using health services. The survey includes topics such as school/work, health problems, healthcare use, mental health, diet, physical activity and body development. Older teens (aged 16+) may also get asked some questions about topics such as sex and contraception.
- Let us use your immunisation and other health records from when you take medication, go to a doctor, or go to hospital.

How are my survey responses and health records used?

Your survey and health records will be used to improve policies and services for teens growing up in Australia in the same way that we have used the information your mum has provided to Women's Health Australia over the past 28 years. An example of this is shown below.

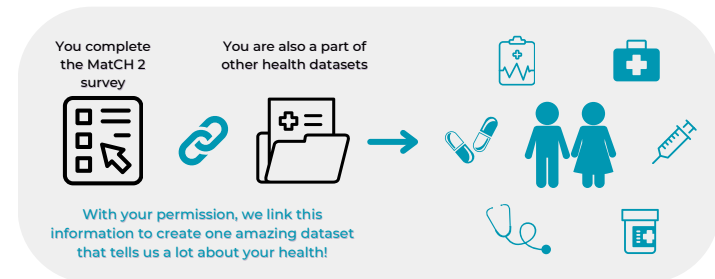


Who should I contact if I have any technical difficulties or other questions?

Call our free-call number (1800 068 081), or send us an email (alswh@newcastle.edu.au).

Why do you need access to my other health records (e.g. immunisations)?

This will allow us to get a really comprehensive view of your health and health care needs, and reduce the number of survey questions we need to ask you.



What kind of information do you get from my other health records?

We will not have access to the results of any medical tests, just information on health events, medical conditions, treatments and medications, services used and how much they cost. See below for an example of the information we get from your other health records.

Date of service	Item number	Item description	Provider charge	Schedule Fee	Benefit Paid	Patient Out of Pocket	Bill Type
20/04/09	00023	Level B Consultation	\$38.30	\$34.30	\$34.30	\$4.00	Cash
22/06/09	11700	ECG	\$29.50	\$29.50	\$29.50		Bulk Bill

How do you keep my data safe?

1. Your personal details (like your name and address) are removed from your survey answers and other health records and stored separately.
2. ID numbers are assigned to protect your privacy.
3. All information is kept confidential and stored securely.

What choice do I have?

Your participation in MatCH 2 is completely voluntary. If you do not want to take part in this study, you do not have to. Choosing not to take part in MatCH 2 will not affect your current or future medical care in any way. Your mum's participation in Women's Health Australia will not be affected by whether you decide to take part in MatCH 2.

How do I participate?

Please make sure that you have read the participant information statement and that you understand its contents before you consent to participate. To participate, check your inbox for your MatCH 2 invitation and click on the link to begin the survey.

facebook.com/womenshealthaustralia/

@alswh_official

@ALSWH_Official

